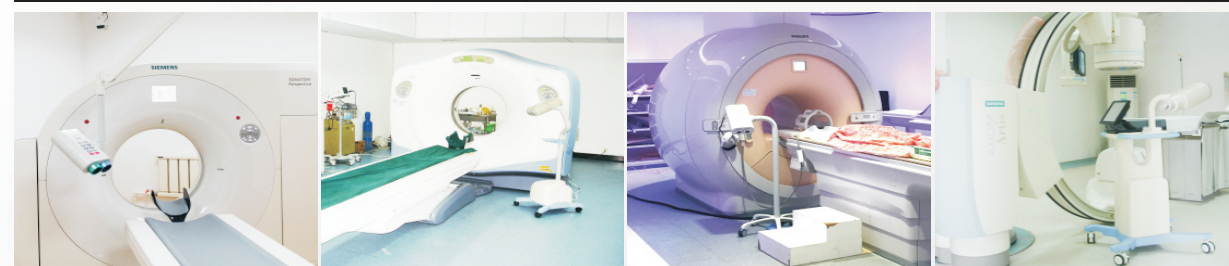


Technical specification	Description
Electrical Requirements	220VAC/110VAC, 50 or 60Hz, 800VA
Operation Interface	Available in English, French, Spanish, German and Chinese
Console	12" Color Touch Screen
Flow Rate	0.1~50 ml/sec. in increments of 0.1 ml/sec, 01~10ml/sec for CT mode
Syringe Capacity	150ml for DSA mode and 200ml for CT mode
Volume	0.1 ml to max. syringe capacity
Rise Time	0.1~1.0 sec., in 0.1 ml increments
Preset Limit	Settable from 300~1200 psi (2070~8280kPa) in 1 psi increments, 0~300 psi for CT mode
Pressure Display	Display real-time pressure curve
Pressure Threshold	Automatically stop injection when pressure over the threshold
Pressure warning	Alarm and stop injection when over preset pressure limit
Injection or Scan Delay	0 to 3599 seconds in 1 sec. increments
Autofill	Settable flow rate from 3 – 8ml/sec., volume from 10ml to syringe capability
Multi-Phase	1–8 phases per injection
Pause	0~999 sec. in 1 sec. increments
Hold Capability	More than 30 minutes
Storage Capabilities	1000 protocols
Expel air locked	Unable to inject unless expelling air
I/O Interface	for GE, Siemens, Phillip, Toshiba, Shimadzu, Lepu, Wandong and Hitachi etc. medical imaging equipment
Heat maintainer	35~38 C(optional)
Emergency stop function	Clicking anywhere on the touch screen of the console or pressing any button on the injector arm to stop protocol injection
Dimension	Injector Arm and Pedestal: L: 27.6" (70.0cm), W: 21.3" (54.0cm), H: 50.2" (127.5 cm) Console: L: 4.55" (11.55cm), W: 12.68" (31.8cm), H: 9.77" (24.81cm) Main controller: L: 16.2" (41.2cm) W: 7.4" (9.1cm) H:10.0" (25.3cm)
Weight	Injector Arm and Pedestal: 14Kg Console: 4.1Kg Main Controller: 7.2Kg



Authorised Sales and Serviced by:
Meditech Infosystems Pvt. Ltd.™
 A Healthcare Solution Provider

Head Office: No.6, Royal Enclave, G-3, Ground Floor, Madambakkam Main Road, Rajakilpakkam,
 Chennai - 600 073. Ph: 044-35658691 / +91 9962 009674

Meditech Sales and Service Presence:
 Delhi, Uttar Pradesh, West Bengal, Karnataka, Andhra Pradesh, Telangana, Kerala.

Email : sales@meditechinfo.in **website :** www.meditechinfo.in



P/N:C20/10-BR01(8)202 REV. B/1, 2019.8



Meditech - Zenith H-15

**Contrast Medium Injection System
 for Angiographic + CT Imaging**

www.meditechinfo.in

Zenith-H15

Contrast Medium Injection System for Angiographic + CT Imaging

The Zenith-H15 contrast media injector, is specially designed for the purpose of delivery contrast medium into humans for angiographic diagnostic studies.

User-Friendly Operations

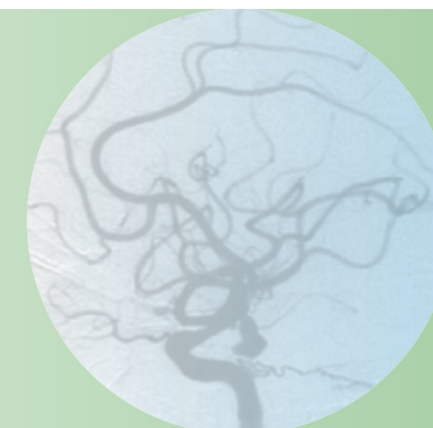
- Programming complex protocols easily on 12" wide touch screen of console
- Performing all operations conveniently either on the console or on the injector arm
- Available to synchronization with GE, SIEMENS, PHILIPS, TOSHIBA, SHIMADZU and HATACHI etc. brands machines.

Reliability & Safety

- High precision of flow rate and volume of injection
- Comprehensive real-time monitoring the pressure and system operating states
- Remote control of injection to reduce the radiations harmful to the operators
- Air expelling lock and warning before injections to reduce risk of air embolism

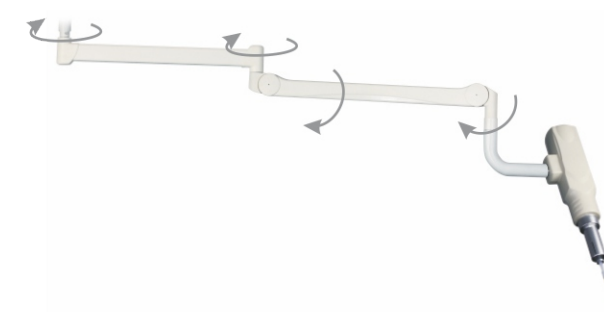
Scientific & Humanized Design

- The injector arm's height and direction are adjustable.
- The pedestal can be moved and locked randomly at expected place.
- The accessory tray frees the user's hands to focus on the operation.



Suspended Arm System (Optional)

- Saving space of scanning room
- More flexible operation
- Getting injector arm and the patient closer



Control room

Examination room



Optional console



P/N C02-001-10

Consumables for Zenith-H15 Angiography injector
(one 150mL syringe, one filling tube)

Pedestal, Injector arm & Console